



Preanes Green Residents' Association

"your community on your doorstep"

11, Feniton, Clovelly Road, Worle, Weston super Mare, BS22 6LN

01934 529733

Preanes Green Winter Bulletin

We wish you all a very happy Christmas and all best wishes for the New Year.

There's lots happening in your area, so take a couple of minutes to check out the latest news.

Why not make it your New Year's resolution to get involved - there's lots of fun to be had and friends to be made - we'd love to see you, so do come along or get in touch.

Jean Garrett. Chair Preanes Green Residents' Association.

Winter Fun

For crafty adults and children alike—fully staffed and great fun
Ring, email or call in to book your place

Monday 21st December 2-4 **It makes scents**
Make exotic spice Christmas Trees to sooth the mind

Wednesday 23rd December 2-4 **Hang it all**
Last minute decorations for the finishing touch

Wednesday 30th December 2-4 **Snakes alive**
Make a fantastic decoration for your room



Christmas Closure

We will close at 12.00 noon on Friday 18th Dec and will be back at 10.00 on Monday 4th Jan.

www.preanesgreen.org.uk preanesgreen@tiscali.co.uk

Company Ltd by Guarantee No: 4622218 Reg. Charity No: 1102804

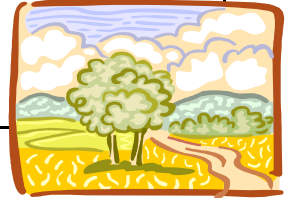
Open Meeting 19th January 7.00pm

The first of our quarterly meetings for 2010 - come along to hear updates from police, housing and ourselves and to hear from Karen Philpott of Age Concern about help available with the digital switchover

Poet's Corner

Local poet Betty Page has made a selection from some of her favourite poems which she is selling to raise funds for the Residents' Association.

Memories . . . Reflections on a Life in Preanes Green is available from the Resource Centre at a cost of £2 - get your copy now!



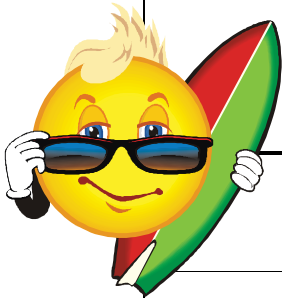
Free WiFi

10—12 Monday to Friday

Bring your own WiFi enabled laptop or mobile phone

Surf in comfort, in company and over a cup of tea or coffee

Or use our Broadband connection - 50p for 30 minutes



Community Research Course

If you are interested in taking part in some free training that will give you some research skills and contribute to the development of the local community, then let us know. We hope to be running a Community Researcher course in January. This is a 6 week one day a week training course for local residents - so please get in touch to discuss further.

