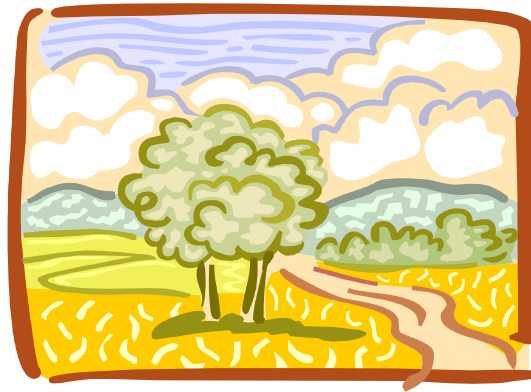




Preanes Green Residents' Association
"your community on your doorstep"

Memories . . .



*Reflections on a Life
in Preanes Green*

By local poet Betty Page

£2—all proceeds to PGRA



11, Feniton, Clovelly Road, Worle, BS22 6LN
01934 529733

preanesgreen@tiscali.co.uk
www.preanesgreen.org.uk

Company Ltd by Guarantee No: 4622218 Registered Charity No. 1102804